



# KCPE REVEALED

## STANDARD EIGHT

### KENYA NATIONAL EXAMINATIONS

**201507**

### — SCIENCE — 2023

**1hr 40min**

KCPE REVEALED NATIONAL EXAMINATIONS

#### READ THESE INSTRUCTIONS CAREFULLY

1. You have been given this question paper and a separate answer sheet. The question paper contains 50 questions.
2. Do any necessary rough work in this paper.
3. When you have chosen your answer, mark it on the ANSWER SHEET, not in this question paper.

#### HOW TO USE THE ANSWER SHEET

4. Use an ordinary pencil only.
5. Make sure that you have written on the answer sheet
 

YOUR INDEX NUMBER

YOUR NAME

NAME OF YOUR SCHOOL
6. By drawing a dark line inside the correct numbered boxes mark your full Index Number (ie. School Code Number and the three-figure Candidate's Number) in the grid near the top of the answer sheet.
7. Do not make any marks outside the boxes.
8. Keep your answer sheet as clean as possible and DO NOT FOLD IT.
9. For each Questions 1 - 50, four answers are given. The answers are lettered A, B, C, D in each case only ONE of the four answers is correct. Choose the correct answer.
10. On the answer sheet show the correct answer by drawing a dark line inside the box in which the letter you have chosen is written.

#### Example

##### In the question booklet

16. Which one of the following is **not** a storage pest?

A. Termites

B. Aphids

C. Weevils

D. Rodents

The correct answer is B

**16.** [A]  [B] [C] [D]

In the set of boxes numbered 16, the box with letter B printed in it is marked

11. Your dark line **MUST BE** within the box.
12. For each question **ONLY ONE** box is to be marked in each set of four boxes.

This question paper consists of 7 printed pages



TURN OVER

Email: [info@pinpointpublishers.co.ke](mailto:info@pinpointpublishers.co.ke)

1. Which one of the following is **not** an immunisable disease?

- A. Measles
- B. Tuberculosis
- C. Bilharzia
- D. Tetanus

2. The following are effects of drug abuse;

- (i) *Marital conflicts*
- (ii) *Unconsciousness*
- (iii) *Rape and prostitution*
- (iv) *Memory loss*

Which pair are only social effects of drug abuse?

- A. ii, iv
- B. i, ii
- C. iii, iv
- D. i, iii

3. Which statement below is **not** true about the second stage of HIV infection?

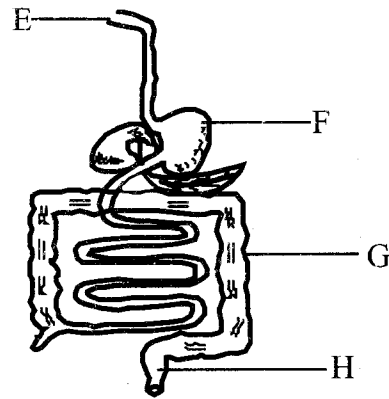
- A. No visible signs and symptoms
- B. The patient can transmit the virus knowingly
- C. The patient has no AIDS
- D. HIV test shows negative results

4. Which chamber of the heart first receives oxygenated blood?

- A. Right ventricle
- B. Left ventricle
- C. Left auricle
- D. Right auricle

-2-

5. The diagram below shows parts of the human digestive system.



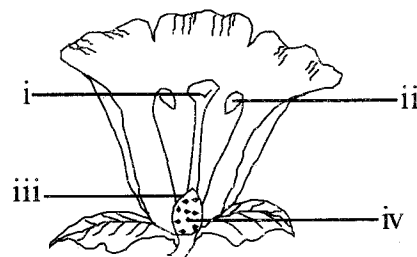
Which letter represents the part that is **correctly** matched to its function?

- A. G - Absorbs some food nutrients
- B. F - Completes digestion of proteins
- C. E - Produces chemicals that kill germs in food
- D. H - Absorbs water and mineral salts

6. Which type of teeth below are shed last?

- A. Canines
- B. Premolars
- C. Incisors
- D. Molars

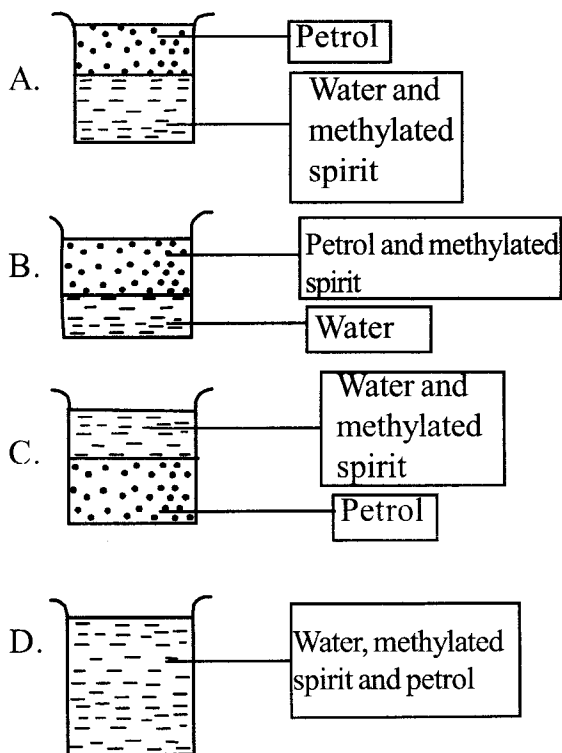
7. The diagram below shows parts of a flower.



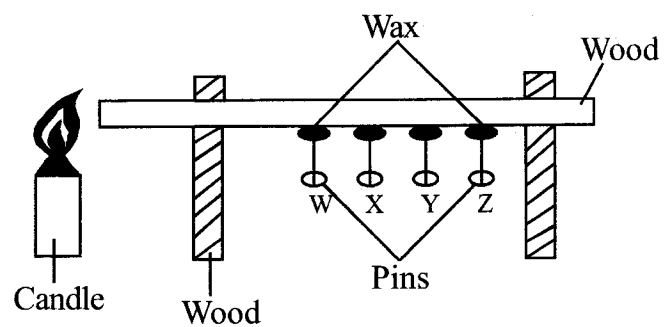
Which part of the flower produces the male reproductive sex cells?

- A. iii
- B. ii
- C. i
- D. iv

8. Which of the following shows the **correct** order of a food chain?  
 A. Grass → Lizard → Gazelle  
 B. Leaves → fox → hyena  
 C. Plants → Aphids → Ladybird  
 D. Leaves → Caterpillar → Locust
9. Which group of plants below have the same type of root?  
 A. Beans and maize  
 B. Millet and Carrot  
 C. Banana and Kales  
 D. Mango and acacia
10. All the following are opaque materials **except**  
 A. mirror  
 B. wood  
 C. shiny metal  
 D. frosted glass.
11. Water, petrol and methylated spirit were mixed in one container. Which one of the following shows the **correct** layers formed?



12. Which one of the following is **not** a common property in both liquids and gases?  
 A. They have definite mass  
 B. They have indefinite shape  
 C. They have indefinite volume  
 D. They change state when cooled.
13. All the following plants are likely to use nitrogen gas to make protein **except**  
 A. coconut  
 B. peanut  
 C. ground nut  
 D. peas.
14. Which one of the following is **not** a poor conductor of electricity?  
 A. Marble  
 B. Thread  
 C. Rubber band  
 D. Bearing
15. Some pupils carried out the experiment shown below.



- Which pin dropped last?  
 A. W  
 B. X  
 C. Z  
 D. None

16. Which one of the following is an internal livestock parasite?  
A. Flea  
B. Mite  
C. Liverfluke  
D. Tick
17. In which method of grazing is a movable fence used?  
A. Zero grazing  
B. Paddock grazing  
C. Tethering  
D. Strip grazing
18. A windsock faced the direction of the sunrise. From which direction was the wind blowing?  
A. South  
B. West  
C. East  
D. North
19. Which one of the following planets is closest to the sun?  
A. Jupiter  
B. Saturn  
C. Mars  
D. Earth
20. Which one of the following plants **cannot** make its own food?  
A. Algae  
B. Moss  
C. Bracket tree  
D. Fern

4

21. The following are some of the physical changes that occur in adolescent girls and boys;

*(i) Pimples may appear on the face*

*(ii) Hips broaden*

*(iii) Growth of pubic hair*

*(iv) Shoulders broaden*

*(v) Rapid body growth*

Which ones are common in both adolescent boys and girls?

A. ii, iv, v

B. i, iv, v

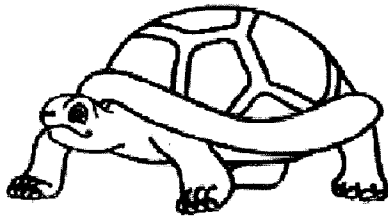
C. i, iii, v

D. ii, iii, iv

22. Which one of the following is **not** a method controlling the spread of typhoid?  
A. Wearing gumboots and gloves when handling stagnant water  
B. Proper disposal of human wastes  
C. Washing hands after visiting the toilet  
D. Vaccination and immediate treatment of patients.
23. All the following are ways of using water sparingly **except**  
A. using drip irrigation  
B. harvesting rain water  
C. insulating hot water pipes  
D. repairing faulty taps.
24. Which one of the following is **not** a recreational use of water?  
A. Water skiing  
B. Swimming  
C. Bathing  
D. Boat racing

25. Which one of the following is **not** a characteristic of nimbus clouds?
- They have round tops
  - They are found low in the sky
  - Their presence indicates heavy rain
  - They have irregular shape

26. Which one of the following is **not** a characteristic of the animal drawn below?

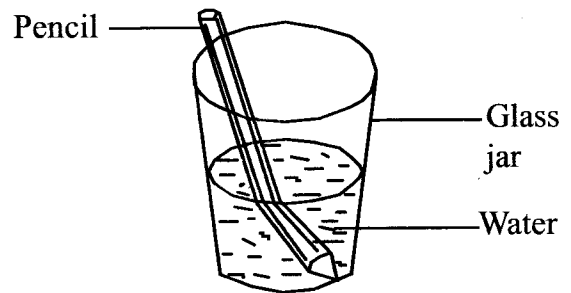


- Its body is covered with dry scales
  - It lays unfertilized eggs
  - It has a varying body temperature
  - It breathes through lung.
27. Which animal below is **correctly** matched to the way it moves?
- |              |   |           |
|--------------|---|-----------|
| A. Cockroach | - | walking   |
| B. Snail     | - | sliding   |
| C. Ostrich   | - | flying    |
| D. Snake     | - | scrawling |
28. Which one of the following is both a modern and traditional method of preserving food?
- Salting
  - Canning
  - Use of honey
  - Drying
29. Which group of food below consists of a balanced diet?
- Meat, Peas and rice
  - Bread, beef and mango
  - Kales, potatoes and carrot
  - Rice, beans and chicken.

5

30. Which one of the following is **not** a source of heat?
- Star
  - Gas
  - Firefly
  - Electricity

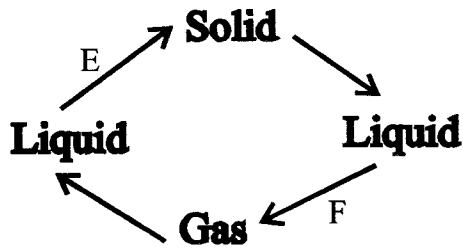
31. Some pupils carried out the experiment shown below.



Which property of light were they investigating?

- Refraction of light
  - Formation of rainbow
  - Light travels in a straight line
  - Reflection of light
32. Which one of the following is the **best** method of separating a mixture of sand and salt?
- Filtering and evaporation
  - Dissolving, decanting and evaporation
  - Dissolving, sieving and evaporation
  - Dissolving, filtering and decanting
33. Which one of the following is **not** a condition necessary for seed germination?
- Light
  - Moisture
  - Oxygen
  - Warmth

34. The chart below shows changes of states of matter.



Name the changes of states of matter marked E and F respectively.

- A. Melting, Evaporation
- B. Freezing, evaporation
- C. Melting, condensation
- D. Freezing, condensation

35. The following are signs and symptoms of a certain disease;

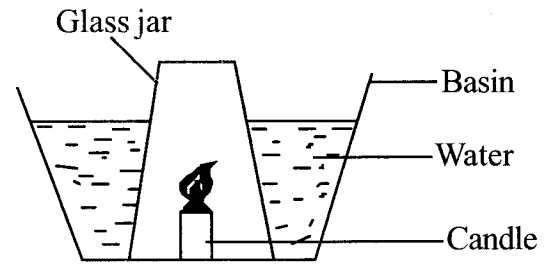
- (i) Sores at the corner of the mouth
- (ii) Thin and loose hair that falls off easily
- (iii) The child does not grow well

Which food group should be given to the above patient in plenty?

- A. Enough quantity of food
- B. Protein
- C. Calcium and vitamin D
- D. Iron

36. Which one of the following is **not** a proper use of medicine?
- A. Always take the right dose
  - B. Label all medicines before storage
  - C. Never take expired medicines
  - D. Always complete the prescribed dose.

37. Some pupils carried out the experiment shown below.



Which statement is **false** about the above experiment?

- A. The candle went off immediately
- B. The level of water in the basin dropped after some time
- C. They concluded that oxygen supports burning
- D. Water level in the jar rose after some time

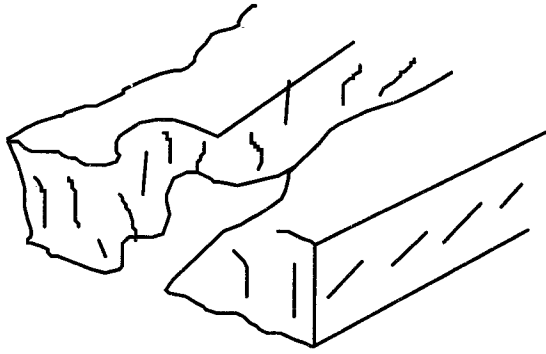
38. Which pair of vaccines below are given at birth?

- A. BCG and 1<sup>st</sup> Oral Polio vaccine
- B. 1<sup>st</sup> DPT and BCG
- C. Hepatitis B and Antimeasles
- D. 1<sup>st</sup> oral polio vaccine and 1<sup>st</sup> DPT

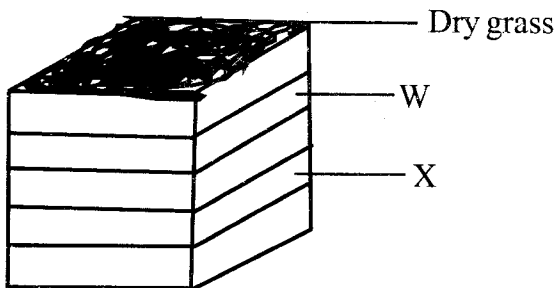
39. Which statement below is **false** about all arteries?

- A. They have narrow lumen
- B. They all transport oxygenated blood
- C. Blood flows through them at high pressure
- D. They all transport blood from the heart

40. Which type of soil erosion is shown in the diagram below?

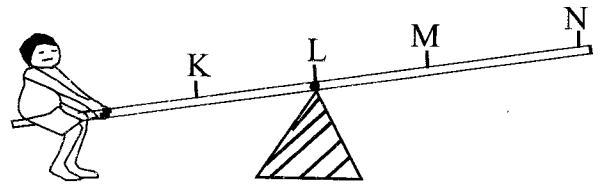


- A. Gully erosion  
 B. Splash erosion  
 C. Rill erosion  
 D. Sheet erosion
41. The following are all characteristics of soil with the poorest capillarity **except**
- A. cannot make ribbons  
 B. has the largest air space  
 C. has the best drainage  
 D. cracks easily when dry.
42. The diagram below shows a compost heap.



- Which material are placed in the layers marked **W** and **X** respectively?
- A. Top soil and kitchen refuse  
 B. Manure and maize stalk  
 C. Wood ash and maize stalk  
 D. Wood ash and kitchen refuse

43. All the following are signs and symptoms of cholera **except**
- A. sunken eyeballs  
 B. vomiting  
 C. blood in stool  
 D. violent diarrhoea.
44. Paul, who weighs 20kg, sat on the see-saw as shown below.



Where should Jane, who weighs 40kg, sit for the two pupils to balance on the see-saw?

- A. M  
 B. N  
 C. K  
 D. L
45. Which one of the following is **not** a type of force?
- A. Weight  
 B. Mass  
 C. Gravity  
 D. Friction
46. Which one of the following is **not** a way of reducing friction force?
- A. Streamlining  
 B. Using bearings  
 C. Treading tyres  
 D. Greasing

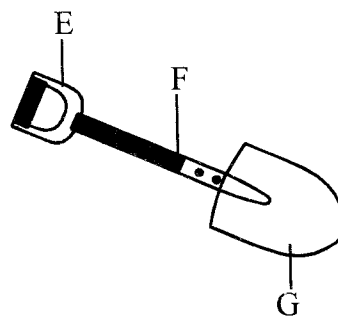
47. The softness or loudness of sound is called

- A. volume
- B. noise
- C. echo
- D. vibration.

48. Which one of the following is **not** a proper way of maintaining tools?

- A. Repairing damaged tools
- B. Using tools appropriately
- C. Avoid using tools regularly
- D. Storing tools properly.

49. The diagram below shows a simple lever.



Which letters represent the positions of load, fulcrum and effort respectively?

- A. G , F, E
- B. E, G , F
- C. F, E, G
- D. G , E, F

50. Which of the following is **not** a factor that affects sinking and floating?

- A. Type of material
- B. Size
- C. Shape
- D. Weight