

READ THESE INSTRUCTIONS CAREFULLY.

- You have been given this question paper and a separate answer sheet. The question paper contains 50 questions.
- Make sure that you have written on the answer sheet.

(i) Your name

(ii) Name of your school

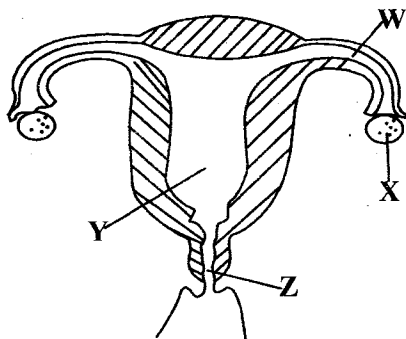
1. Which one of the following organs is **NOT** involved in breathing?

A. Diaphragm
B. Windpipe
C. Oesophagus
D. Bronchioles

2. Which of the following blood vessels carries blood from the lungs to the heart?

A. Aorta
B. Pulmonary vein
C. Venacava
D. Pulmonary artery

3. The figure below represents parts of the female reproductive systems.



Implantation takes place in the part labelled

A. W
B. X
C. Y
D. Z

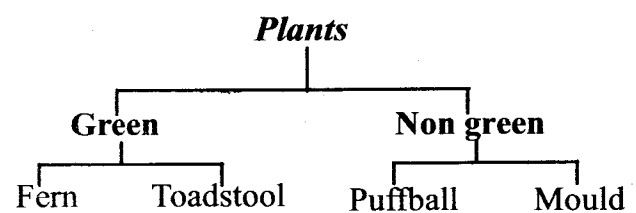
4. The **best** method of controlling ticks and tapeworms in farm animals would be

A. deworming
B. dipping
C. spraying
D. rotational grazing

5. Which of the following statements is false about HIV/AIDS?

A. People with HIV have AIDS
B. White blood cells are destroyed by AIDS Virus
C. Incubation stage last for about 12 years
D. HIV test helps to know how many people are suffering from the disease

6. In the diagram below which plant is **wrongly** classified?



A. mould
B. puffball
C. fern
D. toadstool

7. Which of the following is **not** a health effect of drug abuse?

A. Lack of concentration
B. Truancy
C. Addiction
D. Loss of appetite

8. Which of the following pairs of diseases is an infant immunised against at nine month?

A. Measles and Yellow fever
B. Polio and Tuberculosis
C. DPT and Polio
D. Measles and D.P.T

9. Which one of the following methods of grazing is the farmer **likely** to get most manure?

A. Herding
B. Paddockking
C. Tethering
D. Stall feeding

10. Which of the physical changes takes places in both girls and boys during adolescence?

A. Growth of pubic hair
B. Production of semen
C. Menstruation
D. Enlargement of breasts

11. In which of the following are **both** non-magnetic and magnetic

Non-magnetic

- A. Zinc
- B. Tin
- C. Steel
- D. Aluminium

Magnetic

- Brass
- gold
- Copper
- Nickel

12. Which of the following crops below stores food in the same way as Spinach?

- A. Onions
- B. Carrots
- C. Irish potatoes
- D. Groundnuts

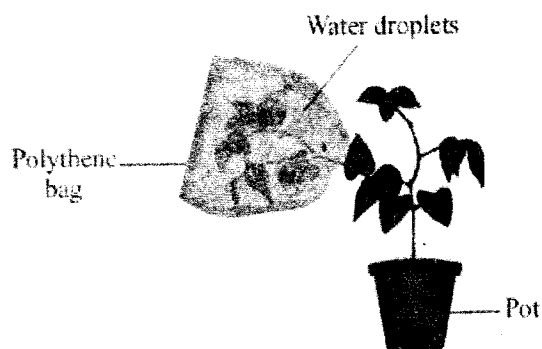
13. The flower that has a sticky stigma is also likely to

- A. be scented
- B. have loosely hanging anthers
- C. be dull in colour
- D. produce light pollen grains

14. A child was taken to hospital and the doctor saw sores developing at the corner of the mouth with swollen face. The doctor advice the mother to give the child

- A. panadol
- B. milk and beans
- C. vegetables and fruits
- D. alot of porridge

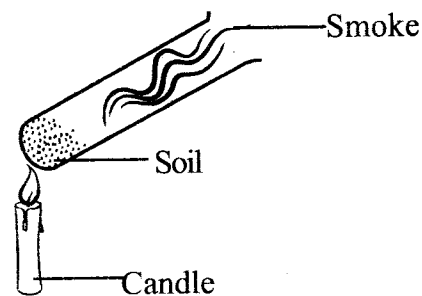
15. Grade 5 pupils set up the experiment below to investigate a certain process in plants



The process investigated was

- A. making plant food
- B. transpiration
- C. absorption in roots
- D. germination

16. Lilian heated some soil as shown below what was she investigating?



- A. Water in the soil
- B. Air in the soil
- C. Living organisms in the soil
- D. Organic matter in the soil

17. The following is a characteristic of a cloud that is dark grey in colour **except**

- A. Covers the whole sky
- B. Appears low in the sky
- C. Has a flat base
- D. Is rain bearing

18. The weather instrument that measures two aspects of weather is known as

- A. windsock
- B. raingauge
- C. windvane
- D. thermometer

19. The planet with the longest orbit is called

- A. Mercury
- B. Uranus
- C. Jupiter
- D. Saturn

20. Use of the excess farm chemicals pollute the soil by -

- A. killing all the weeds
- B. killing useful soil organisms
- C. improving soil composition
- D. reducing plant nutrients

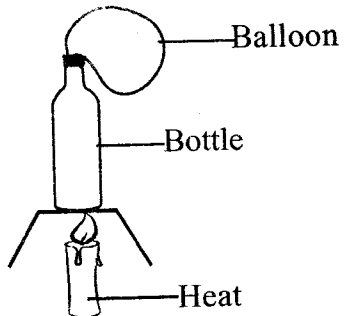
21. The common waste excreted by all excretory organs is

- A. excess salts
- B. urea
- C. sweat
- D. excess water

22. Which of the following measures can control both mites and liverflukes?

- A. Dipping
- B. Deworming
- C. Spraying
- D. Rotational grazing

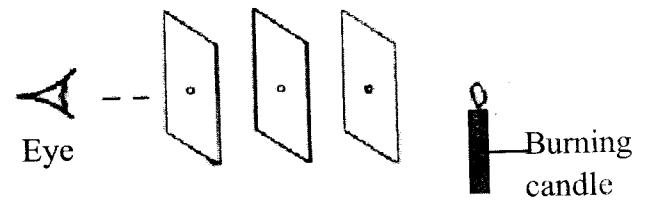
23. A pair of disease that can be controlled by draining stagnant water is?
 A. Malaria and Cholera
 B. Cholera and Typhoid
 C. Bilharzia and Malaria
 D. Cholera and Typhoid
24. The **main** reason as to why commercial feed are fed to animals is to
 A. boost their immunity
 B. supplement other feeds
 C. increase production
 D. protect them from disease
25. Grade 5 learners tied the balloon at the mouth of the bottle and heated the bottom of the bottle as shown below



After a few minutes the balloon got inflated because

- A. air expanded
 B. air contracted
 C. balloon expanded
 D. the bottle expanded
26. The **MAIN** function of the white blood cells is to
 A. increase the amount of blood in the body
 B. carry carbon dioxide to the lungs
 C. fight diseases causing germs
 D. carry oxygen to all body parts
27. Animals depend on plants for all the following factors **except**
 A. medicine B. habitat
 C. food D. pollination
28. Water can be conserved by using it sparingly in the following ways **EXCEPT**
 A. closing taps when not in use
 B. drip irrigation
 C. repairing leaking pipes
 D. re-using dirty water

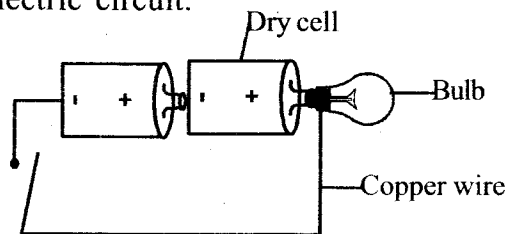
29. In human digestion system, where does absorption of water and mineral salts takes place?
 A. Large intestine B. Small intestine
 C. Rectum D. Duodenum
30. The following should be avoided during heavy down falls due to lightning **except**
 A. sitting in the middle of the house
 B. leaning against a wall
 C. walking in an open fields
 D. carrying sharp open fields
31. All the following diseases are sexually transmitted **EXCEPT**
 A. Gonorrhoea B. Syphilis
 C. HIV/AIDS D. Bilharzia
32. Which is the best way of controlling the spread of STIs among the married in the society?
 A. Through counselling and testing
 B. Being faithful
 C. Abstaining from sex
 D. Campaign against the infection
33. The figure below shows a set up used to investigate a certain aspect of light?



The aspect being investigated is
 A. reflection of light B. uses of light
 C. bending of light D. how light travels

34. Which of the following materials have only definite mass?
 A. Oxygen and tooth paste
 B. Flour and steam
 C. Oxygen and water vapour
 D. Water and paraffine
35. Which one of the following is **not** true about organic manures? They _____
 A. improve drainage in the soil
 B. bind soil particles together
 C. release specific nutrients into the soil
 D. improve air circulation

36. Which among the following is a common characteristic between a frog and a bird?
They
- both lay fertilized eggs
 - all have scales
 - all have a constant body temperature
 - breathe by means of lungs
37. Mulching helps to control soil erosion by
- controlling weeds
 - providing soil with nutrients
 - protecting young seedlings
 - providing a good ground cover
38. Which one of the following food preservation methods is both modern and traditional? Use of
- honey
 - low temperature
 - smoking
 - canning
39. The type of erosion that is characterised by the V-shaped channels is known as
- Gulley erosion
 - Rill erosion
 - Sheet erosion
 - Splash erosion
40. The diagram below represents a simple electric circuit.



Which one of the following energy transformation take place when switch is on

- Chemical → Electrical → Heat → Light
- Electrical → Light → Chemical → Heat
- Chemical → Electrical → Light → Heat
- Heat → Light → Electrical → Chemical

41. Alice wanted to separate a mixture of salt sand, iron fillings. Which one of the steps will come third?
- Use of magnet
 - Filtering
 - Dissolving
 - Evaporation
42. Which one of the following processes occurs as a result of increase in temperature?
- Melting and evaporation
 - Evaporation and condensation
 - Condensation and freezing
 - Freezing and melting

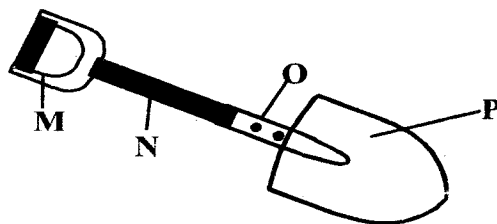
43. Class 8 pupils collected the following materials

*i). two bottles ii). ink iii). straw
iv). water v). manilla paper*

What were the pupils **most** likely to make

- Windsock
- Air thermometer
- Windvane
- Liquid thermometer

44. The figure below is a type of lever



Which of the parts labelled is **likely** to be the point where effort is applied?

- M
- N
- O
- P

45. The importance of fibre in the diet is
- prevent dehydration
 - prevent malnutrition
 - prevent constipation
 - add nutrients to the body
46. Which of the following is **not** a source of electricity
- dynamo
 - car batteries
 - sun
 - solar panels
47. The force that pulls things to the centre of the earth can be measured using a
- spring balance
 - weighing scale
 - see saw
 - newton
48. Which one is **not** a waterborne disease
- Typhoid
 - Malaria
 - Bilharzia
 - Cholera
49. Friction is an advantage in the following activities **except**
- skating
 - walking downhill
 - erasing
 - swimming
50. All the following are reasons why mothers are advised to breastfeed their children for a period of two years **except**
- Breast milk contains all the required nutrients.
 - Breast milk boots the immunity of the child
 - Breast milk is readily available
 - Breast milk is always free from germs