

BRIGHT VISION SERIES

STD 8 - YEAR - 2023

SCIENCE

SASON
003

READ THESE INSTRUCTIONS CAREFULLY

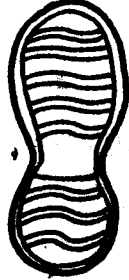
1. Use an ordinary pencil only.
2. Make sure that you have written on the answer sheet.

Time: 1Hour 40Min.

I. YOUR NAME

II. NAME OF YOUR SCHOOL

1. Which one of the following statements about body system is **correct**?
A. The foetus develops in the fallopian tube
B. Implantation takes place in the uterus
C. Lungs pump oxygen to all parts of the body
D. Ovulation takes place twice in a month
2. The diagram below shows sole of a shoe.



The purpose of the tread of the sole is to

- A. increase the opposing force
 - B. making them more comfortable
 - C. make them last longer
 - D. reduce friction
3. Which one of the following immunisable diseases is **correctly** matched with its vaccine?

<u>Disease</u>	<u>Vaccine</u>
A. Measles	O.P.V.
B. Tuberculosis	D.P.T
C. Tetanus	D.P.T.
D. Pertussis	O.P.V.
 4. Which one of the following materials is **not** used when making a simple electric circuit?

A. Dry cell	B. Wire
C. Bulb	D. Switch
 5. The quantity of matter in a substance is determined by

A. mass	B. beam balance
C. spring balance	D. force
 6. Which one of the following is **not** a compound fertilizer?

A. Diammonium phosphate
B. Calcium Ammonium nitrate
C. Mono Ammonium nitrate
D. N.P.K.

7. The juice that is produced in the stomach mainly digest

A. Energy giving food
B. Body building food
C. Protective food
D. Water and mineral salt
8. The following are interdependence in plants **except**

A. food	B. shelter
C. shade	D. habitat
9. The following are methods of conserving water;-
 - i) Use of drip irrigation
 - ii) Treating sewage
 - iii) Use a basin while showering
 - iv) Water for washing vegetables is used to water plants
 - v) Turning off taps when not in use

Which two activities is water used sparingly?

- | | |
|-----------------|-------------------|
| A. (i) and (v) | B. (iii) and (iv) |
| C. (ii) and (v) | D. (ii) and (iv) |
10. Which one of the following is the **main** reason of including water in the diet?

A. Help in emptying bowel
B. Make the diet more nutritious
C. Help to prevent dehydration
D. Help to cool the body
 11. The following are characteristics found in tilapia fish **except** one. Which one is it?

A. Have external fertilization
B. Have a backbone
C. Body is covered with dry scales
D. Breath by means of gills
 12. Which of the following pairs of livestock parasite can be controlled by deworming?

A. Tsetsefly and tapeworm
B. Hookworm and lungworm
C. Mites and ticks
D. Liverfluke and ticks

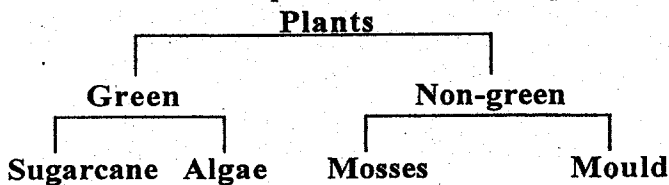
13. Which one of the gases is **correctly** matched with its use?

Gas	Uses
A. Carbondioxide	Green plants making food
B. Nitrogen	Making bulbs
C. Oxygen	Preserving soft drinks
D. Inert	Support burning

14. Which one of the following drugs are harmful but allowed in Kenya?

- A. Alcohol and Bhang
 B. Cocaine and heroine
 C. Mandrax and tobacco
 D. Miraa and alcohol

15. Below is a simple classification of plants.



Which of these plants is **wrongly** classified?

- A. Moulds B. Algae
 C. Mosses D. Sugarcane
16. In human body embryo is formed in the
 A. oviduct B. testis
 C. ovary D. uterus
17. Which one of the following is **best** method of separating grains and chaffs?
 A. Winnowing B. Picking
 C. Evaporation D. Sieving
18. Which of the following pairs of crops are mainly grown because of their threads?
 A. Sunflower and sisal
 B. Cotton and palm trees
 C. Pyrethrum and sugarcane
 D. Barley and oats
19. Drugs taken to treat diseases are know as
 A. painkiller B. antibiotics
 C. curatives D. vaccines
20. Which one of the following is most effective method of campaigning against HIV/AIDS?
 A. Newspapers B. Television
 C. Magazines D. Radios
21. The following processes take place in a flowering plant.
 i) Formation of fruits and seeds
 ii) Fusion of sex cells
 iii) Development of pollen tubes
 iv) Transfer of pollen grains
 v) Germination of a pollen tube

Which is the **correct** order?

- A. (i), (ii), (iv), (iii), (v)
 B. (iv), (v), (iii), (ii), (i)
 C. (ii), (iv), (iii), (v), (i)
 D. (iv), (v), (iii), (i), (ii)

22. The following are physical changes that take place in both boys and girls during adolescence **except**

- A. pimples may appear
 B. increase in weight and height
 C. breast enlarge
 D. production of mature sex cells

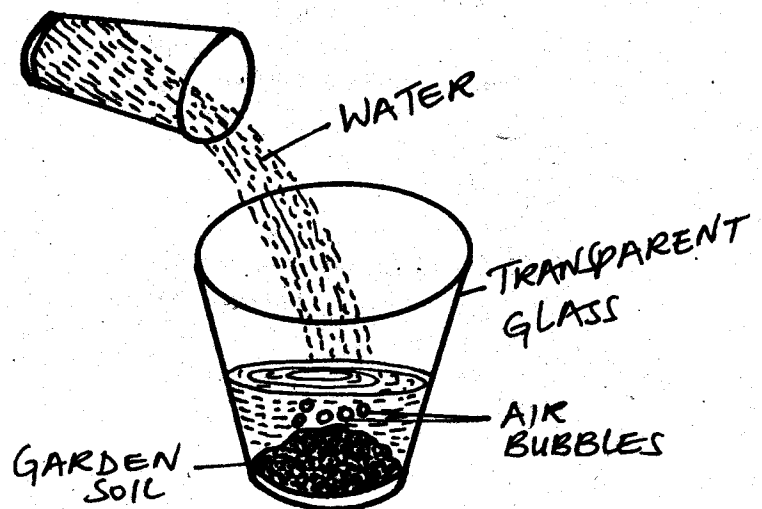
23. Draining stagnant water around homestead mainly prevent the spread of

- A. bilharzia B. malaria
 C. cholera D. typhoid

24. Herbivores have toothless gap between their teeth mainly to help in

- A. preventing tongue injury
 B. proper chewing of food
 C. preventing food sticking between the teeth
 D. crashing bones and sticks

25. The set up below was used to investigate a certain component of soil.



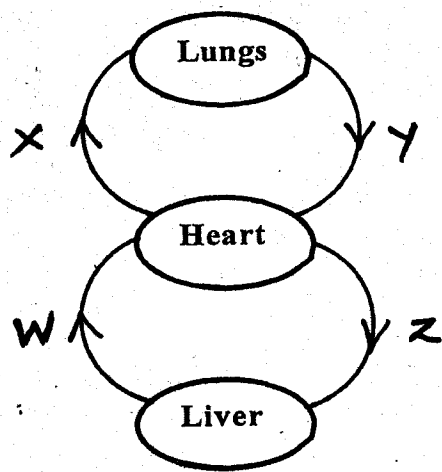
The pupils concluded that soil

- A. contain water
 B. has organic matter
 C. contains hair
 D. contains mineral particles

26. Which one of the following is **not** a myth and misconception about HIV and AIDS?

- A. People infected with HIV virus are always thin
 B. AIDS only affect immoral people
 C. AIDS is only transmitted through body fluids
 D. AIDS is caused by witchcraft

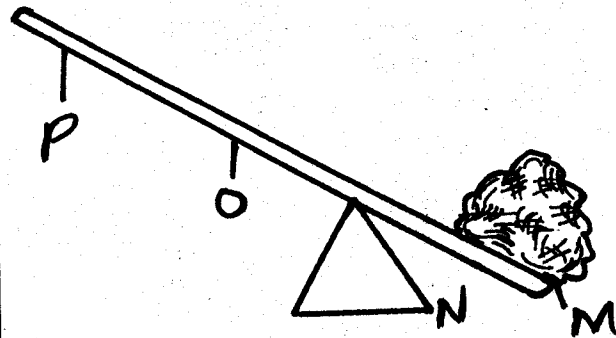
27. Which one of the following is a living component of the environment?
 A. Air B. Stone
 C. Water D. Moulds
28. Which of the following is a health effect of abusing drugs?
 A. Impaired judgement
 B. Truancy
 C. Drug induced accidents
 D. Marital conflict
29. The diagram below represents a human circulatory system.



Which pair of blood vessel carry blood under high pressure?

- A. W and Y B. X and Z
 C. X and Y D. Z and W
30. Which one of the following statements describe human teeth?
 A. Incisors are sharp and chisel shaped
 B. Canines have ridges and three roots
 C. Premolars have ridges and three roots
 D. Canines are pointed with cusps
31. Which one of the following activities describe a **correct** activity done when using a rain gauge?
 A. Should be raised to prevent evaporation
 B. Measuring cylinder should be wide enough
 C. It is dug on the ground to prevent splashing
 D. Reading should be taken at the same time everyday
32. Which one of the following activities is water used for recreation?
 A. Swimming
 B. Making fountains
 C. Rearing fish
 D. Irrigation

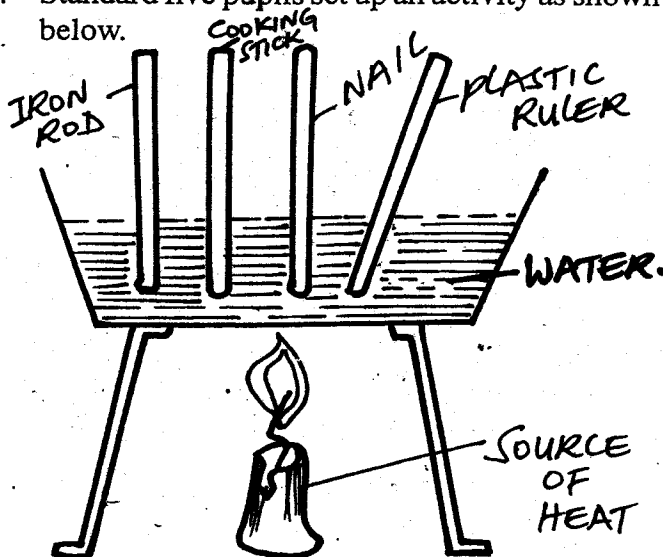
33. The diagram below shows a lever in use.



In which position is effort least applied?

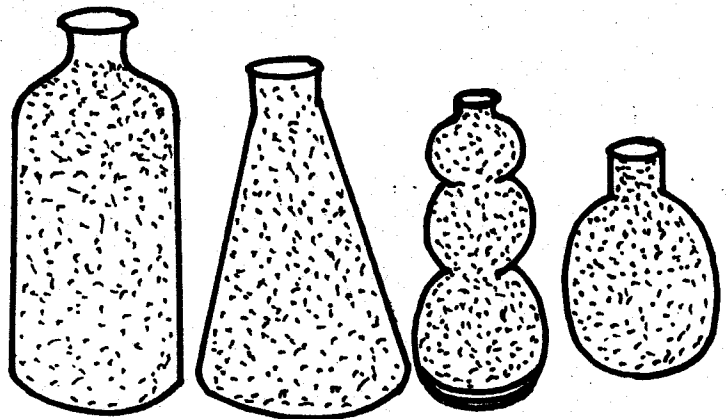
- A. O B. N
 C. M D. P
34. The following signs are of unhealthy plant **except**
 A. curled leaves B. spots and streaks
 C. dark green leaves D. discoloured leaves
35. Which one of the following animals is useful?
 A. Snake B. Housefly
 C. Scorpion D. Butterfly
36. The following are signs and symptoms of a certain disease;-
 i) Vomiting and diarrhoea
 ii) Severe abdominal pains
 iii) Dehydration
 iv) Death may occur in short time
 To prevent the spread of above diseases the patient should
 A. sleep under treated mosquito net
 B. observe high standard of cleanliness
 C. eat proper balanced diet
 D. seek vaccination in the hospital
37. Which of the following groups describe the material that can make the best mirrors?
 A. Opaque, shiny, smooth
 B. Rough, transparent, shiny
 C. Transparent, rough, shiny
 D. Opaque, shiny, rough
38. Which of the following is **not** a safety measure against lightening?
 A. Avoid leaning on walls when it is raining
 B. Fit lightening arrestors on building
 C. Walking on open place with rubber shoes
 D. Never carry sharp metallic objects when it is raining

39. The following are sources of large amount of current electricity except
- hydro electric generator
 - geothermal generator
 - wind driven generator
 - Car battery
40. Which two component of gases are used by plants to make food?
- Oxygen and carbondioxide
 - Nitrogen and oxygen
 - Nitrogen and carbondioxide
 - Oxygen and inert
41. Which one of the following activities is tools used properly?
- Swing a jembe high when digging
 - Never hold a nail for someone when hammering in
 - use a saw using forward and backward stroke
 - Always stay close when using a fork jembe
42. In order for a light person to balance a heavier person on a seesaw the
- heavier person should sit further way from pivot
 - lighter person should sit near the pivot
 - pivot should be near the lighter person
 - heavier person should sit near the pivot
43. The natural home of a living thing is known as its
- | | |
|------------|----------------|
| A. habitat | B. shelter |
| C. shade | D. environment |
44. Which is the fourth and sixth planet from the sun respectively?
- | | |
|--------------------|------------------------|
| A. Saturn and Mars | B. Mercury and Jupiter |
| C. Mars and Saturn | D. Earth and Uranus |
45. Standard five pupils set up an activity as shown below.



The set up was likely to investigate

- conduction in solids
 - convetion in liquids
 - radiation in solids
 - conduction in liquids
46. Two objects of different mass were dropped on the floor from the same height. The pupils observed that
- the lighter one hit the floor last
 - they both hit the floor at the same time
 - the lighter one hit the floor first
 - the heavier one hit the floor first
47. People working in a noisy area should wear all the following except ear
- muffs
 - defenders
 - ear bands
 - plugs
48. The soil with the highest drainage have
- large air spaces
 - highest water retention
 - lowest capillarity
 - rough texture
49. The illustration shown below is used to investigate a certain property of matter.



The illustration shows that liquids

- have definite shape
 - have definite mass
 - occupy space
 - have definite volume
50. The following are special sounds except
- ambulance siren
 - bell ringing
 - woman crying
 - baby crying