

# DISTINCTION SCHOOL BASED ASSESSMENT TEST



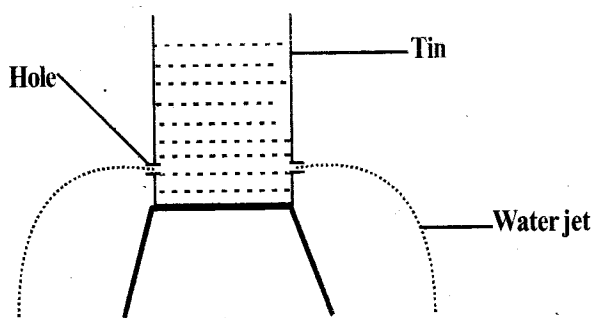
## STANDARD EIGHT - 2023

### SCIENCE

**8**  
**PREMIER**

Time: 1Hr 40mins

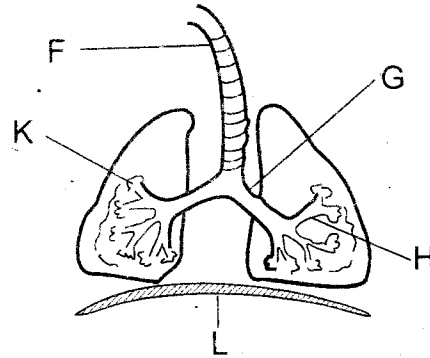
- Which of the following is **not true** about insect pollinated flowers?
  - They have nectaries
  - They have small petals
  - They have anthers which produce sticky pollen grains
  - Pollen grains are firmly attached to the anthers
- A pupil in standard seven set up the apparatus to investigate a certain aspect of pressure. Study it and answer the question that follows.



What conclusion could the pupil make?

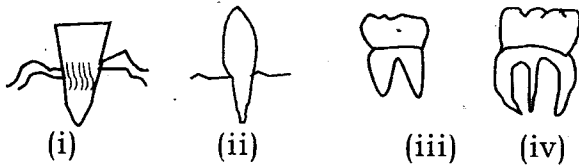
- Air exerts pressure on the surface
  - Pressure in liquids is exerted on the sides only
  - Pressure in liquids increases with increase in depth
  - Pressure in liquids is equal at the same depth
- Which one of the following pairs of the excretory system removes urea from the body?
    - Skin and kidney
    - Liver and lungs
    - Kidney and lungs
    - Lungs and skin
  - The **main** function of the rectum in the digestive system is to \_\_\_\_\_
    - re-absorb water back into the body
    - store solid waste temporarily
    - Force out undigested and waste food material out of the body
    - allow undigested food to undergo digestion

Use the diagram of the breathing system below to answer questions 5-6



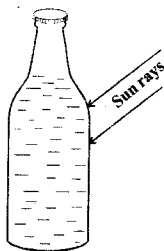
- The functions of the part labelled K is to \_\_\_\_\_
  - keep the lungs open
  - receive de-oxygenated blood.
  - increase the amount of air held in the lungs
  - allow exchange of gases to take place
- The sheet of muscle that relaxes and contracts during breathing is labelled
  - K
  - L
  - G
  - F
- The following are safety measures against lightning **except**
  - avoid swimming when it is raining
  - lightning arrestors to be installed on buildings
  - avoid wearing red garments during thunder storms
  - sit at the middle of the room
- The following are fitted with apparatus to send signals and special messages of emergency EXCEPT
  - fire engines
  - police cars
  - ambulance
  - school bell
- The most abundant component of the blood in the human body is the
  - plasma
  - white cells
  - platelets
  - red cells

10. The diagrams below shows four types of teeth



Which one of the following CORRECTLY represents the type of teeth used for cutting and grinding respectively?

- A. (i) (iv)  
 B. (iv) (ii)  
 C. (iii) (i)  
 D. (ii) (iii)
11. The reason why chemicals like kerosene should not be kept in soda bottles is that  
 A. it can explode into fire  
 B. it can suffocate the room  
 C. avoid poisoning of young children  
 D. avoid pollution of the room
12. One of the following groups consist of storage pests only. Which one is it?  
 A. Aphids, weevils, rats  
 B. Weaver birds, aphids, cutworms  
 C. Mole, stalk borers, moth, rodents  
 D. moth, weevil, rodents
13. A body immersed in water is acted upon by one major force. Which one is it?  
 A. Upthrust force.  
 B. Adhesive force.  
 C. Action and reaction force.  
 D. Force of gravity.
14. Which one of the following materials **cannot** float on water?  
 A. A log of wood B. Rubber  
 C. Bottle top D. A small piece of iron
15. Which of the following agents of soil erosion is MOST destructive?  
 A. Water B. Human activity  
 C. Wind D. Animals
16. A bottle with water was placed on the window sill on a sunny day as shown below



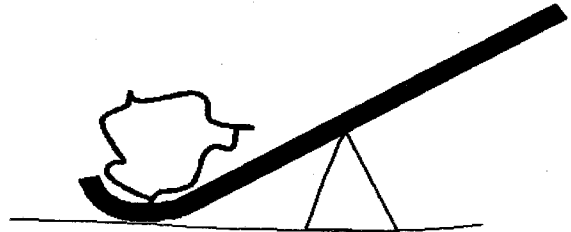
The bottle could be used to learn about  
 A. convection B. reflection  
 C. dispersion D. refraction

17. Which one of the following will help a developing embryo obtain food from the mother?  
 A. Uterus B. Placenta  
 C. Umbilical cord D. Amniotic fluid

18. Which one of the following commercial feed would help a hen lay hard-shelled eggs?

A. Chick mas B. Oyster shell  
 C. Salt lick D. Layers mash

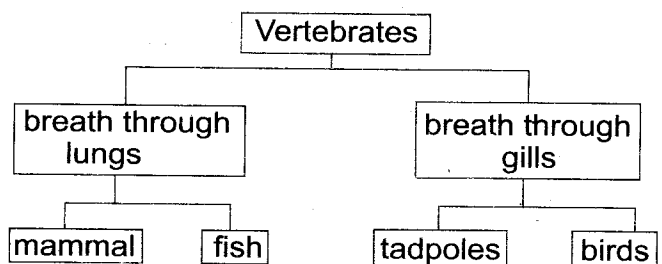
19. The diagram below shows a lever with the fulcrum in between the load and effort



Which one of the following levers have fulcrum in the same position as in the diagram above?

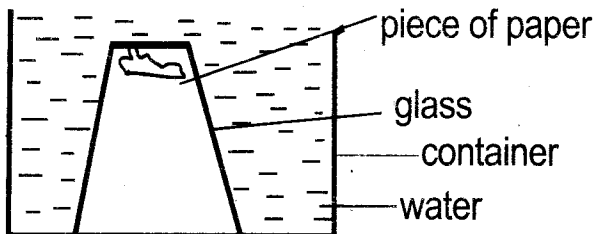
- A. Wheelbarrow B. Bottle opener  
 C. Spade D. Beam balance
20. During photosynthesis, plants transform solar energy into \_\_\_\_\_  
 A. chemical B. heat  
 C. light D. electrical
21. Which food crop is **correctly** matched with its source?  
 A. Carbohydrates → legumes, eggs cassava  
 B. Proteins → legumes, meat, fish  
 C. Vitamins → avocado, pawpaw, sweet potatoes  
 D. Minerals → cassava, maize, wheat
22. Which one of the following consists of materials which are all attracted by a magnet?  
 A. Aluminium, brass, copper  
 B. Iron, steel, cobalt  
 C. Iron, copper, cobalt  
 D. Steel, brass, aluminium
23. Which of the following is **not** a sexually transmitted disease?  
 A. Gonorrhoea B. Diphtheria  
 C. Syphilis D. Chancroid

The diagram below shows a simple classification of vertebrates



24. Which vertebrates are **correctly** matched?  
 A. Birds, fish B. Mammals, birds  
 C. Tadpoles, fish D. Mammals, tadpoles

25. Which one of the following is a method of softening hard water?
- A. Filtering                      B. Boiling  
C. Decanting                      D. Sieving
26. Which of the following blood components is **not** a solid part of blood?
- A. Red cells                      B. Platelets  
C. Plasma                      D. White cells
27. Most rodents like rats, mice and squirrels eat roots, grains and other hard substances. They have chisel-like teeth called incisors. These animals are called \_\_\_\_\_ mammals
- A. gnawing                      B. pouched  
C. primate                      D. incisors
28. Which one of these statements is **not true** about insects?
- A. They have compound eyes  
B. An insect has six legs  
C. All insects have three body parts  
D. All insects move by flying
29. A growing infant suffers bruises, cuts and other injuries as he or she runs about. What food nutrients does the infant require in large quantities for quick healing process?
- A. Mineral salts                      B. Vitamins  
C. Carbohydrates                      D. Proteins
30. The diagram below shows a set up that was used by a standard 5 class to demonstrate a certain property of matter.

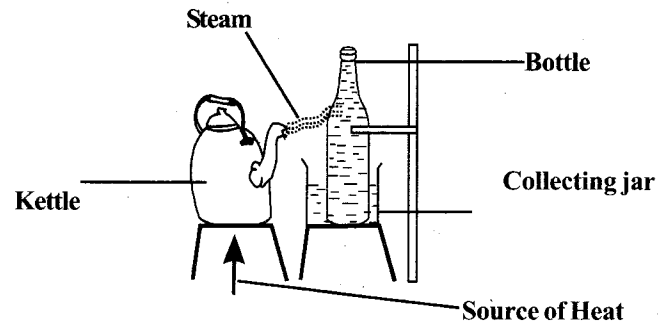


The property being demonstrated was \_\_\_\_\_

- A. water occupies space  
B. water exerts pressure  
C. air occupies space  
D. air has mass
31. The type of manure made by cutting growing crops into pieces and then ploughing them into the soil in the farm is \_\_\_\_\_
- A. vegetation manure  
B. compost manure  
C. green yard manure  
D. mulching
32. One of the following consists of a pair of animal parasites that can be controlled using a drenching gun. Which one is it?
- A. Roundworms and liverflukes  
B. Tapeworms and tsetse flies  
C. Ticks and mites  
D. Liverflukes and ticks

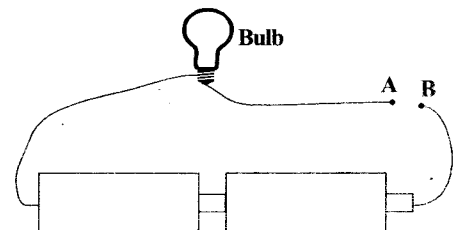
33. The part of the digestive system in which food substances are not changed as they pass along is the \_\_\_\_\_
- A. stomach                      B. gullet  
C. small intestine                      D. mouth

**The set up shown in the diagram was used to demonstrate the water cycle. Use it to answer questions 34**



34. The liquid that would work best in the bottle should be \_\_\_\_\_
- A. warm  
B. frozen  
C. cold  
D. hotter than steam
35. The immunisable disease for which a vaccine is given to infants only once is \_\_\_\_\_
- A. yellow fever                      B. polio  
C. tetanus                      D. tuberculosis

**Standard seven pupils were investigating good and bad conductors of electricity as shown below.**



36. Which one of the following materials can fill the gap between A and B for current to flow?
- A. Glass                      B. Graphite  
C. Plastic                      D. Plasticine
37. A patient had the following signs
- (i) A cough that lasted more than three weeks  
(ii) Pain in the chest and upper back  
(iii) Frequent fever  
(iv) Excessive loss of weight and increasing weakness
- Which of the following diseases could the patient be suffering from?
- A. Measles                      B. Tuberculosis  
C. AIDS                      D. Flu

38. Algae → small fish → big fish → king fisher  
If all the big fish were to be wiped out, what would be the immediate effect?

	Algae	Small fish	King fisher
A.	Decrease	increase	decrease
B.	Increase	increase	decrease
C.	Decrease	decrease	decrease
D.	Increase	decrease	decrease

39. Which one of the following processes would help you to separate a mixture of sand, iron filings, salt and saw dust?

- A. Winnowing, magnet, filtering, evaporation
- B. Magnet, decanting, filtering, distillation
- C. Decanting, floating, using a magnet, filtering
- D. Using a magnet, filtering, evaporation, distillation

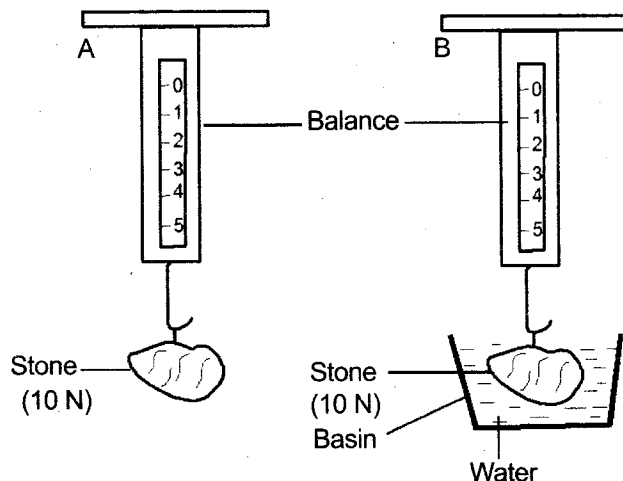
40. A standard eight girl was carrying a bucket full of water from the river. Accidentally, her foot knocked a stone and the bucket fell spilling all the water on the ground. What type of soil erosion is **likely** to take place?

- A. Splash
- B. Gully
- C. Rill
- D. Sheet

41. Which of these pairs of plants have a tap root?

- A. Coconut and potato
- B. Maize and sorghum
- C. Acacia and papyrus
- D. Bean and groundnut

42. The diagrams below show a stone weighing 10N used to perform an experiment by class 8 pupils.



What did the pupils observe during the experiment?

- A. Scale B read lower than scale A
- B. The scale reading on A was lower than the scale reading on B
- C. Scale B reading was equal to scale A
- D. Scale B did not give any reading due to change in gravity

43. On what fact does the liquid thermometer depend on its working principle?

- A. Water freezes when cooled
- B. Water evaporates when heated
- C. Water expands when heated and contracts when cooled
- D. Water boils when heated and freezes when cooled

44. Which pair of processes below release heat to the environment?

- A. Melting and freezing
- B. Melting and evaporation
- C. Condensation and freezing
- D. Condensation and evaporation

45. A nurse noticed a child who had swollen stomach and swellings on the hands, feet and face. The nurse advised the mother to feed the child with

- A. eggs, milk, rice
- B. beans, eggs, milk
- C. rice, meat, potatoes
- D. fish, chapati, milk

46. During a science lesson, a group of standard 8 pupils discussed and recorded some points about HIV/AIDS as follows

- (i) Cannot be cured
- (ii) It is a result of witchcraft
- (iii) It is a curse
- (iv) It can be cured by herbs
- (v) It is a punishment from God
- (vi) It is a viral disease

Which points were NOT myths?

- A. (ii) and (iv)
- B. (i) and (vi)
- C. (iii) and (v)
- D. (ii) and (iv)

47. The result of overgrazing in some parts of our country has \_\_\_\_\_

- A. decreased animal production
- B. increased animal production
- C. encouraged heavy loss of soil fertility
- D. helping in soil conservation

48. Which of the following media transmits sound BEST and effectively?

- A. Air
- B. Vacuum
- C. Water
- D. Solids

49. Three of the following are ill-health signs in livestock. Which one is **not**?

- A. Stunted growth
- B. Reduced yield
- C. Loss of weight
- D. Mounting on others

50. Which of the following stores food in the stem?

- A. Carrots
- B. Irish potatoes
- C. Sweet potatoes
- D. Cassava