

10.11 SOCIAL STUDIES AND RELIGIOUS EDUCATION

THE KENYA NATIONAL EXAMINATIONS COUNCIL
Kenya Certificate of Primary Education

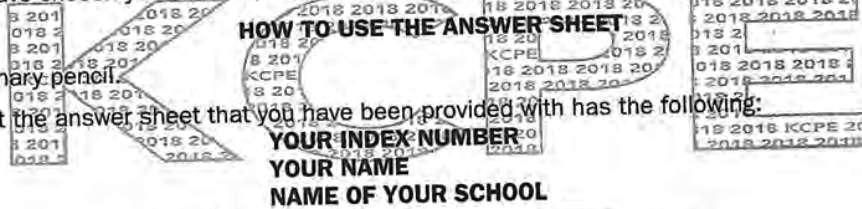
506

- SOCIAL STUDIES AND - RELIGIOUS EDUCATION Nov. 2018 - 2 hours 15 minutes



INSTRUCTIONS TO CANDIDATES (Please read these instructions carefully)

1. You have been given this question booklet and a separate answer sheet. The question booklet contains 90 questions.
2. Do any necessary rough work in this booklet.
3. When you have chosen your answer, mark it on the **ANSWER SHEET**, not in this question booklet.
4. Use an ordinary pencil.
5. Confirm that the answer sheet that you have been provided with has the following:



6. Do not make any marks outside the boxes.
7. Keep the sheet as clean as possible and do not fold it.
8. For each of the questions 1-90, four answers are given. The answers are lettered A, B, C and D. In each case, only **ONE** of the four answers is correct. Choose the correct answer.
9. On the answer sheet, the correct answer is to be shown by drawing a **dark line** inside the box in which the letter you have chosen is written.

Example:

In the Question Booklet.

33. Among the Agikuyu, people who were initiated together formed

- A. a sub-tribe
- B. a clan
- C. a generation
- D. an age-group

The correct answer is "D"

On the answer sheet:

31 [A] [B] [C] [D] 32 [A] [B] [C] [D] 33 [A] [B] [C] [D] 34 [A] [B] [C] [D] 35 [A] [B] [C] [D]

In the set of boxes numbered 33, the box with the letter D printed in it is marked.

10. Your **dark line** **MUST** be within the box.
11. For each question **ONLY ONE** box is to be marked in each set of four boxes.

This Question Paper consists of 16 printed pages.

© 2018 The Kenya National Examinations Council

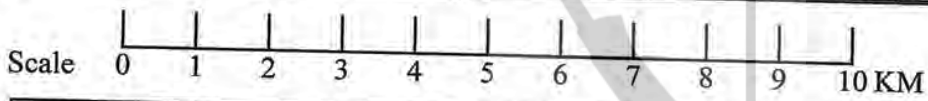
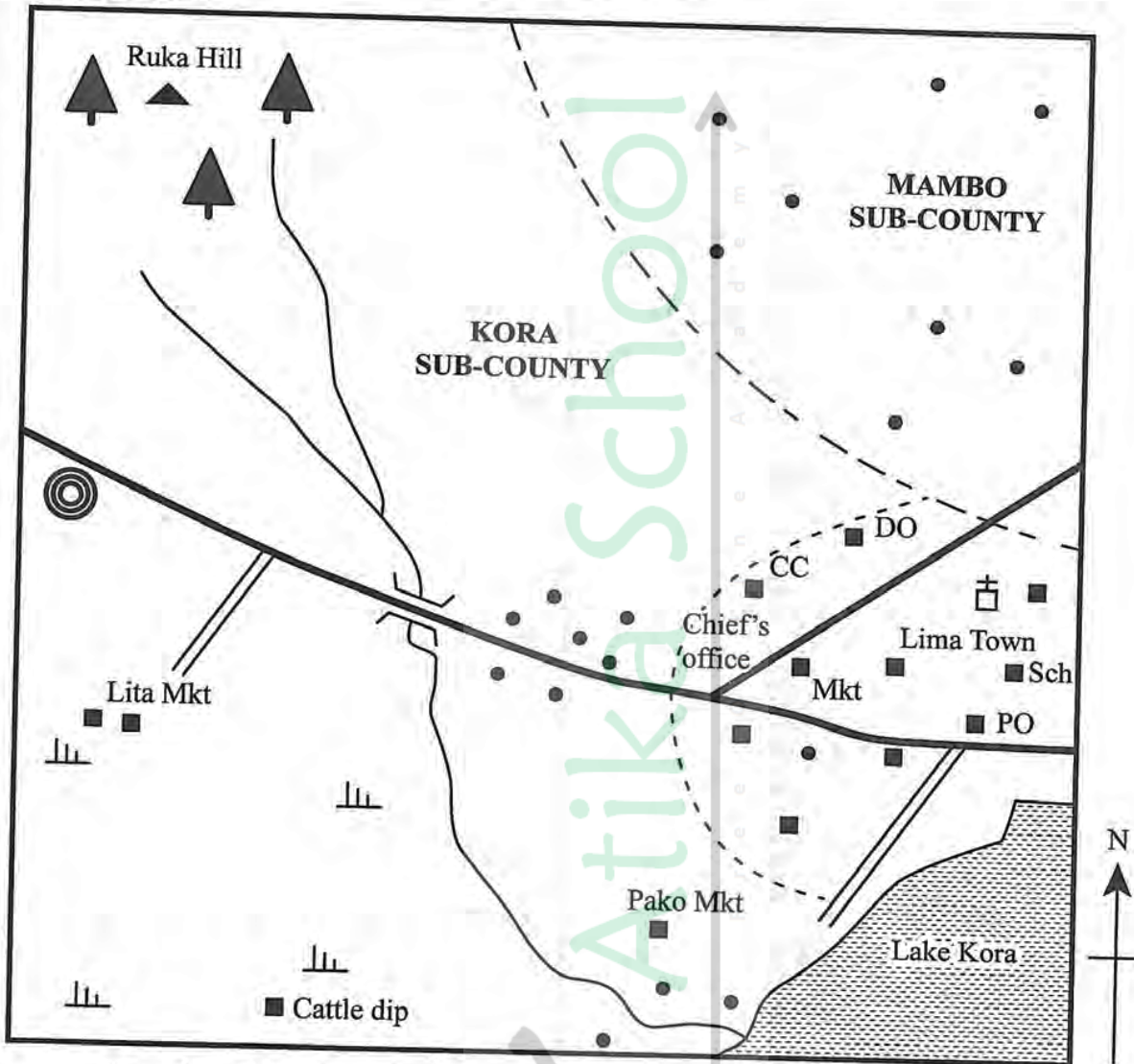
506

908506

Turn over

PART I: SOCIAL STUDIES

KORA AREA



KEY	
	Murram road
	Tarmac road
	Bridge
	Permanent buildings
	Houses
	Hill
	Forest
	Scrub
	Quarry
	Sub-County boundary
	Church
	CC County Commissioner
	DO District Office
	Mkt Market
	PO Post Office

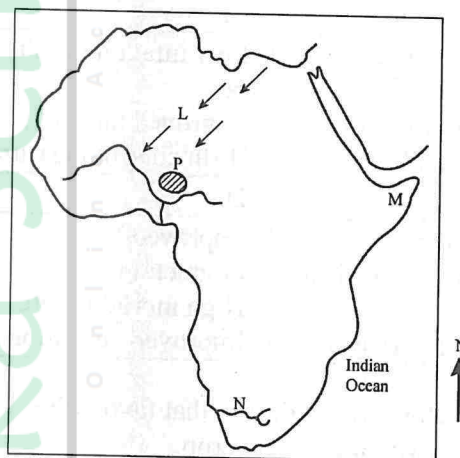
Study the map of Kora Area and answer questions 1–7.

1. What is the direction of Ruka hill from the church at Lima town?
 - A. North East.
 - B. North West.
 - C. South East.
 - D. South West.
2. The approximate area of Lake Kora is
 - A. 4 km².
 - B. 9 km².
 - C. 12 km².
 - D. 16 km².
3. The climate around Lita market is likely to be
 - A. Cool and wet.
 - B. Hot and wet.
 - C. Cool and dry.
 - D. Hot and dry.
4. The settlement pattern in Mambo sub-county can be described as
 - A. Clustered.
 - B. Sparse.
 - C. Dense.
 - D. Linear.
5. The most likely factor that influenced the growth of Lima town is
 - A. transport network.
 - B. agricultural activities.
 - C. fishing.
 - D. mining.
6. Which of the following social services is offered in Lima town?
 - A. Health.
 - B. Education.
 - C. Recreation.
 - D. Security.
7. Who is the **most** Senior Administrator in Kora area?
 - A. Chief.
 - B. Member of County Assembly.
 - C. County Commissioner.
 - D. Governor.
8. A nuclear family consists of
 - A. grandfather, mother, uncle.
 - B. mother, uncle, children.
 - C. aunt, grandfather, children.
 - D. father, mother, children.
9. Which one of the following groups of Eastern Africa communities consists of the River Lake Nilotes?
 - A. Nandi, Turgen, Keiyo.
 - B. Dinka, Nuer, Anuak.
 - C. Alur, Lango, Njemps.
 - D. Samburu, Maasai, Turkana.
10. At what stage of human evolution did human beings assume upright posture?
 - A. Homo habilis.
 - B. Homo erectus.
 - C. Homo sapiens.
 - D. Homo sapiens sapiens.
11. The revolution of the earth causes seasons due to
 - A. Change in the position of the overhead sun.
 - B. Deflection of winds.
 - C. Different time at different longitudes.
 - D. Rise and fall of tides.
12. The **best** way of solving disagreements among the pupils in school is by
 - A. setting strict rules.
 - B. punishing the offenders.
 - C. sending away disobedient pupils.
 - D. involving pupils in decision making.
13. In Africa, some mountains have been worn down by erosion leaving behind features called
 - A. Horsts.
 - B. Craters.
 - C. Escarpments.
 - D. Inselbergs.
14. Maize growing in Kenya and Tanzania is important **mainly** because it
 - A. is the staple food.
 - B. is used as animal feed.
 - C. creates employment.
 - D. is raw material for oil industries.

15. The school administration consists of the following **except** the
- Class teacher.
 - Head-teacher.
 - Deputy head teacher.
 - Board of Management.
16. Which one of the following statements is **true** about the Kabaka of the Buganda Kingdom?
- He was elected by the people.
 - He administered a chiefdom.
 - He was the commander-in-chief of the army.
 - He appointed the Council of elders.
17. Who among the following early visitors to Eastern Africa was a missionary?
- Karl Peters.
 - Joannes Rebmann.
 - John Speke.
 - William Mackinnon.
18. Which of the following types of fish is found in the sea?
- Trout.
 - Nile perch.
 - Mackerel.
 - Black bass.
19. The country that borders Kenya to the North is called
- Somali.
 - Uganda.
 - Sudan.
 - Ethiopia.
20. The old urban centres found along the Kenyan coast developed **mainly** as a result of
- Trade.
 - Tourism.
 - Industries.
 - Administration.
21. The following are factors that determine national unity. Which one is **not**?
- Religious differences.
 - Power struggle.
 - National language.
 - Scarcity of resources.

22. A standard 8 pupil asked his teacher about people who may **not** be granted dual citizenship in Kenya. What would be the correct response?
- Religious leaders.
 - University students.
 - People from other countries.
 - Senior Government officers.

Use the map of Africa provided below to answer questions 23 to 26.



23. The winds marked **L** are called
- Westerly winds.
 - Monsoon winds.
 - South East Trade Winds.
 - Harmattan winds.
24. The main language group found in the area marked **M** is
- Semites.
 - Nilotes.
 - Bantus.
 - Cushites.
25. The river marked **N** is
- Limpopo.
 - Zambezi.
 - Orange.
 - Cunene.
26. The physical feature marked **P** is
- Jos plateau.
 - Fout Djallon Plateau.
 - Bié plateau.
 - Adamawa Plateau.

27. Who among the following traditional leaders fought the colonial rulers?

- A. Masaku.
- B. Sakawa.
- C. Nabongo Mumia.
- D. Koitalel Samoei.

28. Which one of the following combinations of factors may contribute to high population growth rate?

A.

Improved medical care
Cultural values
Low fertility rate

B.

Low infant mortality rate
Improved nutrition
Birth control measures

C.

High birth rates
Improved medical care
Early marriages

D.

Improved food production
High mortality rate
Improved education

29. Below are conditions that favour the growth of a certain crop.

- (i) Well drained acidic soils.
- (ii) Temperatures of 15 °C–22 °C.
- (iii) Well distributed rainfall of between 1250 mm and 1650 mm.

The conditions listed above favour the growing of

- A. Cotton.
- B. Cocoa.
- C. Tea.
- D. Sugarcane.

30. Which one of the following statements is **true** about religious and civil marriages in Kenya?

- A. In both marriages a man marries one wife.
- B. Both marriages are conducted by magistrates.
- C. In both marriages certificates are issued.
- D. Both marriages are conducted by elders.

31. Peter, a class six pupil found his classmates quarrelling over sitting position in class. The **best** action for him to take is

- A. let the pupil sit where they prefer
- B. encourage them to dialogue
- C. report the matter to the teacher
- D. make decision for them.

32. In the national flag, the green colour represents

- A. Land.
- B. Peace.
- C. People.
- D. Common struggle.

33. Cocoa is important to the economy of Ghana **mainly** because it

- A. has created employment.
- B. has led to development of transport.
- C. has led to growth of industries.
- D. is the leading foreign exchange earner.

34. Which one of the following countries is **correctly** matched with its capital city?

- | Country | Capital City |
|-------------|--------------|
| A. Cameroon | Rabat |
| B. Malawi | Lilongwe |
| C. Morocco | Moroni |
| D. Comoros | Yaunde |

35. The following are roles of Government in trade. Which one ensures market for the Kenyan products?

- A. Creation of Ministry of Trade.
- B. Provision of currency.
- C. Imposing taxes on foreign goods.
- D. Improving means of transport.

36. Which one of the following practices is a form of child abuse?

- A. Sending children to school.
- B. Ensuring children do their homework.
- C. Having children clean themselves.
- D. Recruiting children to work.

37. The following are uses of a mineral found in Kenya. It is used in
- construction of roads.
 - manufacturing of paints.
 - water treatment.
 - manufacturing of fertiliser.

The mineral described above is

- Limestone.
 - Dialomite.
 - Gemstone.
 - Marble.
38. The **main** problem facing tourism in Eastern Africa today is
- poor roads.
 - cost of marketing.
 - high taxes.
 - terrorism.
39. Which one of the following instruments is **correctly** matched with the element of weather it measures?

Instrument	Element of weather
A. Hygrometer	Humidity.
B. Anemometer	Atmospheric pressure.
C. Wind vane	Wind Speed.
D. Barometer	Wind Direction.

40. Martin, a standard six pupil, has a heart disease and requires a lot of money for treatment. The **easiest** method his father would use to appeal for assistance is through the
- radio.
 - television.
 - newspaper.
 - social media.
41. Which one of the following is **common** about industries in Eastern Africa?
- They manufacture goods for export.
 - They produce goods for the local market.
 - They are located in rural areas.
 - They depend on foreign labour.

42. Which one of the following countries is **correctly** matched with the European power that colonised it?

Country	European power
A. Egypt	Italy.
B. Madagascar	France.
C. Namibia	Britain.
D. Somalia	Germany.

43. The **main** reason for the formation of Organisation of Africa Unity (OAU) was to
- encourage economic cooperation.
 - help to liberate South Africa.
 - represent Africa in international meetings.
 - promote peace in the region.
44. African socialism is important because it
- promotes co-operation.
 - is meant for Africans.
 - encourages competition.
 - trains political leaders.
45. Three of the following are characteristics of natural forests in Africa. Which one is **not**?
- Trees are of different species.
 - Trees have layers of leaves.
 - Trees are mainly softwood.
 - Trees take long to mature.
46. The **best** method of preserving fish in deep sea fishing is
- salting.
 - canning.
 - freezing.
 - smoking.
47. Which one of the following is **true** about both Julius Nyerere of Tanzania and Gamal Abdel Nasser of Egypt?
- They were founder members of OAU.
 - They were forced out of power by the army.
 - They introduced socialism in their countries.
 - They established the kingship system in their countries.

48. Fulani of West Africa migrate from one place to another in order to
- A. reach animal markets.
 - B. avoid animal diseases.
 - C. escape areas of conflict.
 - D. search for pasture.

49. The most common means of transport in Eastern Africa is
- A. water.
 - B. air.
 - C. railway.
 - D. road.

50. Below are statements that describe some roles in a democracy.
- (i) Participating in national elections.
 - (ii) Encouraging people to vote.
 - (iii) Promoting national unity.
 - (iv) Allocating resources for development.
 - (v) Reviewing electoral boundaries.

Which one of the following combinations of statements describe the role of political parties in a democracy?

- A. (i), (ii), (iii).
 - B. (ii), (iii), (iv).
 - C. (ii), (iv), (v).
 - D. (i), (iv), (v).
51. Three of the following are security organs involved in external security in Kenya **except**
- A. Kenya Army.
 - B. Kenya Navy.
 - C. Air force.
 - D. National Police Service.
52. The armed struggle for independence in Kenya started **mainly** because
- A. More Africans had received western education.
 - B. Political parties had been formed.
 - C. The ex-soldiers of second world war formed military groups.
 - D. Appointment of Africans in the government encouraged young men to fight.

53. The following statements describe systems of colonial administration in Africa.
- (i) Africans were appointed chiefs.
 - (ii) Africans were made citizens of the colonial power.
 - (iii) Africans were made Christians.
 - (iv) Africans retained their traditions.
 - (v) Africans were exempted from taxation.

Which one of the following combination of the statements above is **true** about assimilation?

- A. (i), (ii), (iii).
 - B. (ii), (iii), (v).
 - C. (iii), (iv), (v).
 - D. (i), (iv), (v).
54. The statements below describe a regional organisation in Africa.
- (i) It has the largest number of membership.
 - (ii) It was formed in 1994.
 - (iii) It has its headquarters in Lusaka, Zambia.

The organisation described above is

- A. The Common Market for Eastern and Southern Africa (COMESA).
 - B. The Economic Community of West African States (ECOWAS).
 - C. The South African Development Community (SADC).
 - D. The Inter-Governmental Authority on Development (IGAD).
55. Mary visited a Jua Kali industry near her school. She asked an artisan the **importance** of Jua Kali industry. Which one of the following would be the correct response?
- A. Improving the standards of living.
 - B. Providing raw materials for manufacturing industries.
 - C. Preserving culture.
 - D. Conserving energy.
56. In Kenya, the Parliament is made up of the
- A. National Assembly and Senate.
 - B. County Assembly and Cabinet.
 - C. Judicial Service and County Assemblies.
 - D. Cabinet and Senate.

57. Peter and Maina had disagreement on ownership of a piece of land. They decided to go to a court of law to resolve the conflict. The method they used is
- Negotiation.
 - Mediation.
 - Litigation.
 - Peace making.
58. At independence, the head of government in Kenya was the
- Prime minister.
 - President.
 - Queen.
 - Governor.
59. The main source of revenue for the county government in Kenya is
- market fee.
 - charges from recreational areas.
 - harambee funds.
 - grants from the national government.
60. The structure of the government of Kenya is guided by the
- Presidency.
 - Constitution.
 - Parliament.
 - People.

PART II: RELIGIOUS EDUCATION
SECTION A
CHRISTIAN RELIGIOUS EDUCATION

61. Adam and Eve were chased out of the garden of Eden according to the story of the fall of human beings in Genesis 3:1–24 because they had
- destroyed God’s creation.
 - spoken to the snake.
 - disobeyed God’s instructions.
 - hidden themselves from God.
62. During the call of Abraham, he showed his faith in God when he
- took his nephew Lot to go with him.
 - moved from Haran to the land that God would show him.
 - welcomed the three men into his home.
 - went to Egypt to look for food.

63. Joseph was sold by his brothers to Egypt because they
- were jealous of him.
 - wanted to get money.
 - were requested by the Ishmaelites to do so.
 - wanted him to buy food for them in Egypt.
64. Moses was not willing to go to Egypt to deliver the Israelites from slavery **mainly** because he was
- too young.
 - not a good speaker.
 - afraid of Pharaoh.
 - having a young family.
65. The covenant between God and the Israelites at Mount Sinai was sealed by
- circumcising all their male children.
 - giving them the ten commandments.
 - choosing good leader to guide them.
 - sprinkling blood on the Israelites.
66. The commandment broken by King Ahab when he took Naboths vineyard is
- “Do not commit adultery.”
 - “Do not accuse anyone falsely.”
 - “Observe the sabbath and keep it holy.”
 - “Do not use my name for evil purposes.”
67. “And so, without a sword, David defeated and killed Goliath with a sling and a stone.” (1 Samuel 17:50). The quality demonstrated by David during this incident is
- tolerance.
 - humility.
 - courage.
 - respect.
68. Who among the following prophets prophesied that the messiah would be born in Bethlehem?
- Micah.
 - Amos.
 - Isaiah.
 - Hosea.

69. Prophet Jeremiah foretold that the laws in the New Covenant would be
- read to the people by priests.
 - observed communally.
 - written on a stone tablet.
 - written in people's hearts.
70. "Now, Lord, you have kept your promise and you may let your servant go in peace" (Luke 2:29). These words were spoken during the presentation of Jesus in the temple by
- Anna.
 - Simeon.
 - Elizabeth.
 - Zachariah.
71. Jesus accompanied his parents to Jerusalem when he was twelve years old in order to
- visit his relatives there.
 - be registered in a census.
 - celebrate the passover festival.
 - attend a wedding ceremony.
72. Which one of the following statements was said by God during the baptism of Jesus?
- "There is the lamb of God who takes away the sins of the world."
 - "My child will be called a prophet of the most High God."
 - "His kingdom will always be at peace."
 - "This is my own dear son, with whom I am pleased."
73. The parable of Jesus that teaches about the forgiveness of sins is the parable of the
- lost son.
 - sower.
 - good samaritan.
 - mustard seed.
74. "First take the log out of your own eye and then you will be able to take the speck out of your brother's eye" (Matthew 7:5). A lesson Christians learn from these words said by Jesus is that they should
- remove dirt from other people's eyes.
 - take good care of their eyes.
 - not judge other people.
 - not allow specks to get to their eyes.
75. The main lesson Christians learn from the incident when Jesus healed the centurion's servant is that they should
- give instructions to their servants politely.
 - care for the needs of others.
 - speak on behalf of their servants.
 - welcome people into their homes.
76. "This man was really the son of God" (Mark 15:39). Who among the following people said these words after witnessing the death of Jesus on the cross?
- Joseph of Arimathea.
 - Pilate.
 - The repentant thief.
 - The Roman officer.
77. The women went early in the morning to the tomb where Jesus had been buried because they wanted to
- anoint his body with spices.
 - protect the body of Jesus.
 - confirm that he had indeed risen.
 - cover his body with clean linen.
78. The lesson Christians learn from the incident when Stephen was stoned to death is that they should
- confess their mistakes.
 - forgive their enemies.
 - keep away from their enemies.
 - defend themselves when accused unfairly.
79. Phillip was led by the Holy Spirit to go to the road going to Gaza in order to preach to
- Saul.
 - Ananias.
 - the samaritan woman.
 - the Ethiopian Eunuch.

80. Which one of the following set of boxes contains books of the Bible that are found in the Old Testament?

A	B	C	D
John Jude Timothy	Ezra Matthew Amos	Esther Nehemiah Joshua	Mark Job Titus

81. A common belief found in both traditional African communities and Christianity is the belief in
- life after death.
 - the holy trinity.
 - resurrection of the body.
 - the second coming of Christ.
82. People pray facing mountains in some traditional African communities because mountains are believed to be
- beautiful to look at.
 - source of water.
 - near the sky.
 - God's dwelling place.
83. The **main** reason why an expectant mother is given special treatment in traditional African communities is to
- make her strong.
 - please the ancestors.
 - prevent her from being injured.
 - protect the life of the unborn.
84. Who among the following religious specialists is found in both African communities and Christianity?
- Rainmakers.
 - Herbalists.
 - Priests.
 - Diviners.
85. Christians in Kenya participate in tree planting exercise **mainly** to
- care for the environment.
 - have enough timber.
 - sell them for money.
 - attract tourists.

86. While emptying the class litter bin, Janice a Standard Eight pupil, tells you that she has found the teacher's wrist watch wrapped in a paper. As a Christian what advice would you give her? Tell her to
- sell the watch quickly.
 - give you the watch to keep for her.
 - return the watch to the owner.
 - take the watch home to her brother.
87. A Standard Five class teacher has asked the pupils to clean their classroom. Evans is not willing because he feels the work will make him dirty. As a Christian what is the **best** advice you can give him? Tell him to
- hide when others are working.
 - report the matter to his parents.
 - ask for permission to go home.
 - do the work with others.
88. Allan a Standard Seven pupil is planning to engage in various activities during the school holidays. Which one of the following activities shows the **best** use of leisure time?
- Participating in a walk to raise money for the sick.
 - Attending his uncle's wedding.
 - Going for a trip with friends.
 - Playing football.
89. Your friend Rachel is part of the group that is selling stolen textbooks to second hand dealers. She asks you to join them so as to get some money. As a Christian what is the **best** action for you to take?
- Join the group as requested.
 - Tell other friends about it.
 - Accept the offer and keep quiet.
 - Refuse and tell her the consequences.
90. Premarital sex is discouraged in Christianity **mainly** because it
- can lead to suffering in life.
 - defiles the body which is the temple of God.
 - can lead to unwanted pregnancy.
 - makes someone drop out of school.