



# Manyam Franchised Tests

SCIENCE | KCPE | 2007

NAME..... SCHOOL.....DATE..... TIME: 2 hour

1. Which one of the following is NOT CORRECTLY matched with its function?

- | Part               | function                   |
|--------------------|----------------------------|
| A. Oesophagus      | passage of food            |
| B. Stomach         | mixes food with enzymes    |
| C. Small intestine | complete digestion of food |
| D. Large intestine | absorbs digested food      |

2. Which one of the following is NOT A CORRECT statement about reproduction in human beings?

- A. Fertilization takes place in the uterus
- B. The zygote gets implanted in the wall of the uterus
- C. The blood of the mother and foetus do not mix
- D. Menstruation stops during pregnancy

3. The blood vessel through which deoxygenated blood flows to the heart is the

- A. Aorta
- B. Pulmonary artery
- C. Vena cava
- D. Pulmonary vein

4. Which one of the following changes take place during adolescence in boys only?

- A. Fast body growth
- B. Growth of pubic hair
- C. Chest and shoulders become broader
- D. Releasing of sex cells

5. Which of the following statements is TRUE about HIV and AIDS?

- A. All HIV positive people have AIDS

B. During the window stages a person may test negative

C. It can be transmitted by sharing utensils

D. It is not spread during the asymptomatic phase

6. Which one of the following is NOT a communicable disease?

- A. Whooping cough
- B. Tetanus
- C. Tuberculosis

D. Measles

7. A child suffering from kwashiorkor should be given a diet rich in

- A. Carbohydrates
- B. Fats
- C. Vitamins
- D. Proteins

8. Wearing protective clothing while walking in stagnant water can prevent one from contracting

- A. Bilharzia
- B. Typhoid
- C. Typhoid and cholera
- D. Bilharzia and cholera

9. Which of the following statements is CORRECT according to immunization schedule of infants?

- A. The first dose of polio is given at 6 weeks
- B. DPT vaccine is given at birth and 10 weeks
- C. DPT and measles vaccine are given at 14 weeks
- D. Polio and BGG vaccines are given at birth

10. Plants appear bright because they

- A. Reflect light
- B. Produce light
- C. All twinkle
- D. Are large

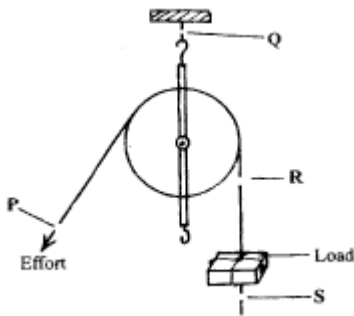
11. A pupil gave the following reasons as to why dairy cattle are given commercial feeds.

- i. To increase milk production
- ii. Given only to cattle under zero grazing
- iii. To supplement other feeds
- iv. Only when fodder crops and pasture are not available.

Which two reasons are CORRECT?

- A. (i) and (iii)
- B. (ii) and (iv)
- C. (i) and (iv)
- D. (ii) and (iii)

12. The diagram below represent a set-up that is used to lift load.



To investigate the force required to lift the load a spring balance must be at

- A. P
- B. Q
- C. R
- D. S

13. The following are some methods of preserving foods:

- i. Smoking
- ii. Drying
- iii. Freezing
- iv. Salting
- v. Canning

Which method are traditional?

- A. (ii), (iv) and (v)
- B. (ii), (iii) and (v)
- C. (i), (iii) and (iv)
- D. (i), (ii) and (iv)

14. Which one of the following pairs of machines belongs to the same group as a ladder?

- A. Claw hammer and bottle opener
- B. Spade and fishing rod
- C. Staircase and road winding uphill
- D. Handcart and wheelbarrow

15. The reason why an ordinary jiko without a clay lining is not recommended for use is because

- A. It pollutes the environment
- B. Of the large amounts of charcoal used
- C. It takes a long time when cooking
- D. It gets too hot to hold

16. The following are liquids added together in glass bottles labelled P, Q, R and S by some pupils.

P- kerosene and cooking oil

Q- water and cooking oil

R- milk and water

S- milk and kerosene

Which glass bottle contains liquids that cannot be separated by decanting?

- A. P

- B. Q
- C. R
- D. S

17. Which one of the following plants is green and non-flowering?

- A. Mould
- B. Onion
- C. Sisal
- D. Moss

18. Which one of the following consists of a pair of storage pests?

- A. Rats and aphids
- B. White ants and rats
- C. Aphids and cutworms
- D. White ants and cutworms

19. Which one of the following is a possible food chain that could be found in a grassland inhabited by hawks, frogs, snakes, mice and grasshoppers?

- A. Grass---- grasshopper ----frogs---- snakes
- B. Grass ----grasshoper----frogs-----mice
- C. Grass-----snakes----mice----hawks
- D. Grass----- grasshopper ----hawks---snakes

20. Which one of the following is TRUE for both chickens and frogs? Both

- A. Have a constant body temperature
- B. Have scales
- C. Breath by lungs
- D. Feed on insects only

21. Which one of the following is NOT a rotational method of grazing?

- A. Paddockging
- B. Herding

- C. Tethering
- D. Strip

22. Birds which feed on nectar have

- A. Short pointed beaks
- B. Strong curved beaks
- C. Long slender pointed beaks
- D. Long slender curved beaks

23. In which one of the following practices is water re-used?

- A. Using dirty water from the kitchen for watering plants
- B. Collecting rainwater from the roof for domestic uses
- C. Getting clean water from dirty water by boiling and cooling the steam
- D. Storing water in dams to be used in irrigation

24. The texture of a soil type depends on the

- A. Amount of water in the soil
- B. Organic matter in the soil
- C. Amount of mineral particles in the soil
- D. Size of soil particles

25. The component that makes up 0.97% of air is used in

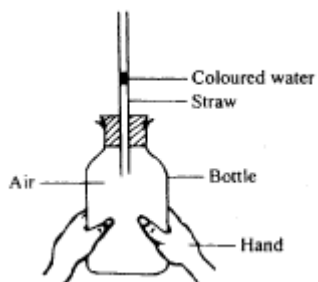
- A. Rusting
- B. Preservatiuon of soft drinks
- C. Electic bulb
- D. Making proteins

26. Which one of the following pairs of processes ia as a result of increase in temperature?

- A. Melting and evaporation
- B. Condensation and freezing
- C. Condensation and evaporation

D. Melting and freezing

27. The diagram below show a set up that was used to demonstrate a certain property of matter.



The coloured water rises up the straw because

- A. Liquids expand when heated
- B. Liquids occupy space
- C. Air occupies space
- D. Air expands when heated

28. A sufuria made up of steel weighing 1000g floats on water while a nail made of iron weighing 50g sinks.

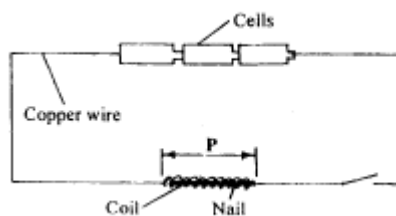
This is because of difference in

- A. Type of material
- B. Shape
- C. Volume
- D. Mass

29. Which of the following material will NOT be required in an experiment to show that pressure in a liquid increase with depth?

- A. Tin can
- B. Water
- C. Nail
- D. Collecting jar

30. The diagram below represents a circuit that can be used to make a temporary magnet.



The energy transformation that occurs at the section marked P is

- A. Electrical \_\_\_ magnetic
- B. Chemical \_\_\_ electrical
- C. Heat \_\_\_ electricity
- D. Chemical \_\_\_ magnetic

31. The following are forms of energy

i.Heat

ii.Electricity

iii.Light

iv.Sound

The two forms of energy that DO NOT require a medium for transmission are

- A. (ii) and (iv)
- B. (i) and (iii)
- C. (i) and (ii)
- D. (iii) and (iv)

32. The following practices help to conserve energy:

i.Using improved firewood jikos

ii.Switching off light that use hydro-electric power when not needed

iii.Using public transport whenever possible

iv.Using biogas for cooking

Which Two practice conserve non- renewable source of energy?

- A. (i) and (ii)
- B. (ii) and (iii)

- C. (ii) and (iv)
- D. (iii) and (iv)
33. Which of the following is a recommended practice to avoid being struck by lightning?
- A. Sheltering under tree
- B. Using an umbrella when in an open field
- C. Sheltering while leaning on a wall
- D. Wearing rubber shoes with thick soles
34. Which one of the following group consists of only foodstuff that are used for body building and repair?
- A. Rice, orange, meat
- B. Wheat, fish, maize
- C. Beans, potatoes, groundnuts
- D. Eggs, peas, milk
35. The function of fibre in the human diet is to
- A. Provide the body with nutrients
- B. Transport digested food
- C. Prevent constipation
- D. Help in digestion of food
36. Which one of following statements is NOT TRUE about the force that opposes movement the force
- A. Can be reduced by streamlining
- B. Makes the load heavier
- C. Increase effort required to move the load
- D. Produce heat
37. A farmer noticed small and shallow channels forming in the soil in the garden due to running water. This type of soil erosion is called
- A. Splash
- B. Rill
- C. Sheet
- D. Gully
38. Which one of the following plants is a cereal?
- A. Millet
- B. Coffee
- C. Sunflower
- D. Peas
39. Which one of the following consists of a pair of plants that CANNOT make their own food?
- A. Fern and pine
- B. Toadstool and moss
- C. Puffball and mould
- D. Cedar and yeast
40. Which one of the following pairs of parasites can be controlled by spraying?
- A. Ticks and fleas
- B. Liver flukes and tsetse flies
- C. Fleas and liver flukes
- D. Ticks and tapeworms
41. Which one of the following sources of electricity pollutes the environment?
- A. Geothermal
- B. Wind-driven generators
- C. Hydro-electric generators
- D. Petrol-driven generators
42. Which one of the following is a natural way of lighting a house? using a
- A. Candle
- B. Torch
- C. Hurricane lamp
- D. Transparent roof

43. Which one of the following components is found in all environments?

- A. Plants
- B. Soil
- C. Air
- D. Water

44. Which one of the following groups of methods can be used to separate solid mixtures only?

- A. Sieving, picking, winnowing
- B. Picking, use of magnet, decanting
- C. Winnowing, sieving, filtration
- D. Use of magnet, filtration
- E. Use of magnet, filtration, decanting

45. Which one of the following DOES NOT function the same way as a bicycle dynamo when used to produce electricity?

- A. Hydro-electric generator
- B. Car battery
- C. Diesel generator
- D. Wind driven turbines

46. The diagram below represent a simple machine.

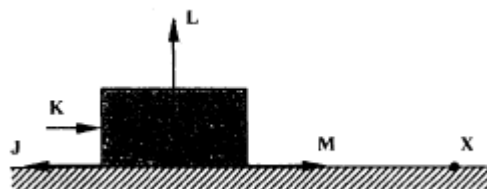


Which of the position labelled P,Q and R would represent the load, effort and function when the machine is in use?

- |    | Load | effort | fulcrum |
|----|------|--------|---------|
| A. | P    | Q      | R       |
| B. | R    | P      | Q       |
| C. | Q    | P      | R       |

D. R Q P

47. The diagram below represents a block of wood being pushed along pushed a surface towards point X



Which one of the arrows represents the direction of the force of friction?

- A. J
- B. K
- C. L
- D. M

48. Which one of the following consists of only material that are ALL non-magnetic?

- A. Aluminimim foil, a shilling coin
- B. Iron nails, staple pins
- C. Metal scissors, steel wool
- D. Piece of glass, sewing needle

49. The reason why coloured water is used in the construction of a liquid thermometer is to

- A. Make it visible
- B. Make it expand faster
- C. Make it absorb more heat
- D. Increase its density

50. Which one of the following is the largest plant?

- A. Mercury
- B. Saturn
- C. Jupiter
- D. Earth