

Response Pattern

Option	A	B	C*	D
% choosing the option	42.29	24.26	23.88	9.11
Mean mark in other questions	19.18	17.52	22.26	17.00

The question required the candidates to sign out the given vocabulary and identify which sign uses one hand when it is made. Majority of the candidates (42.29%) went for option A while the correct answer is C. Learners should be exposed to more reading for details and critical thinking in contexts that can help them answer questions numbers correctly.

27. SIGN BELOW HAND MOVE UP-DOWN NOTHING WHICH _____?

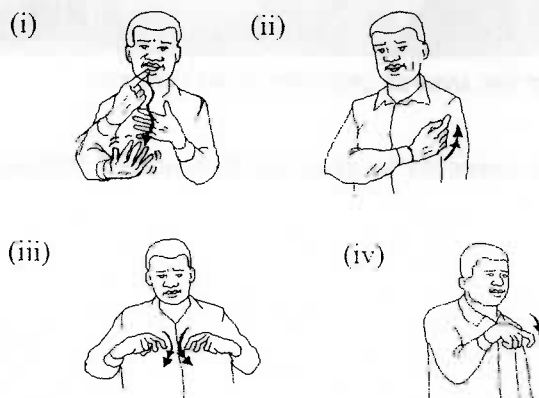
- a) WARM //
- b) WOMAN //
- c) PEACE //
- d) PAINT//

Response Pattern

Option	A	B	C*	D
% choosing the option	36.19	25.56	22.95	15.30
Mean mark in other questions	20.97	17.59	19.71	18.45

The candidates were expected to sign out the given signs and identify the sign which does not have an up and down movement. Majority of the candidates (36.19%) went for option A while the correct answer is C. Teachers are advised to teach the various elements of a sign and the correct movement for each sign.

29. SIGN BELOW OBSERVE KSL ORDER CORRECT IDENTIFY//

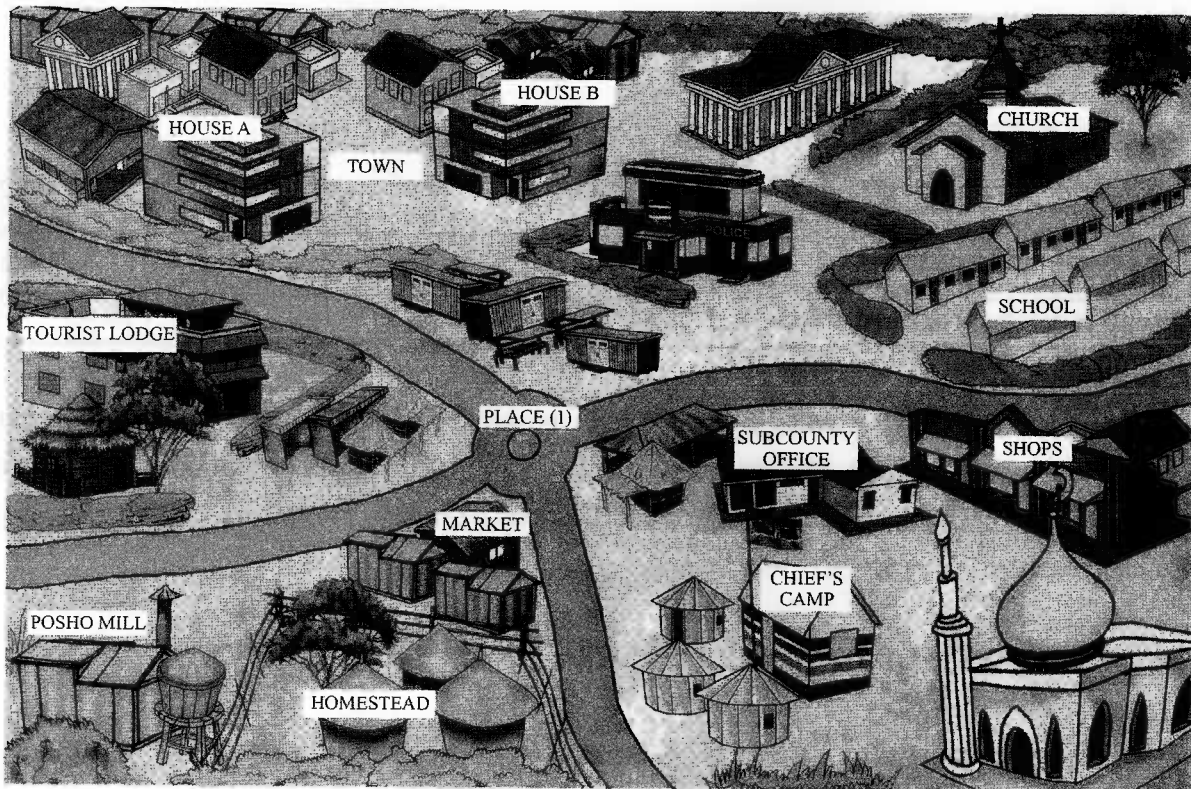


- a] (iii) (iv) (ii) (i) //
- b] (i) (iii) (iv) (ii) //
- c] (i) (ii) (iv) (iii) //
- d] (i) (ii) (iii) (iv) //

Response Pattern

Option	A	B*	C	D
% choosing the option	21.23	23.93	19.46	34.82
Mean mark in other questions	18.29	20.46	18.91	19.13

In Question 29 the candidates were expected to know how each of the signs is made and pick out the correct sign word order in KSL. Majority of the candidates (34.82%) went for option D however Option B is the correct answer. Learners should be exposed to more KSL vocabulary in contexts that can help them group signs and identify the correct sign word order.



OBSERVE PICTURE THIS SAME USE ANSWER QUESTION 31-40 CORRECT//

Based on the picture given, candidates were expected to give the direction of various points from specified in questions 32 and 34

32. PLACE (1) NAME ?

- a] ROAD JUNCTION //
- b] ROAD BEND //
- c] ROAD CORNER //
- d] ROAD CROSS //